



## 15 Cosgrove Crescent

, Failsworth, M35 0JX

**Asking Price £240,000**



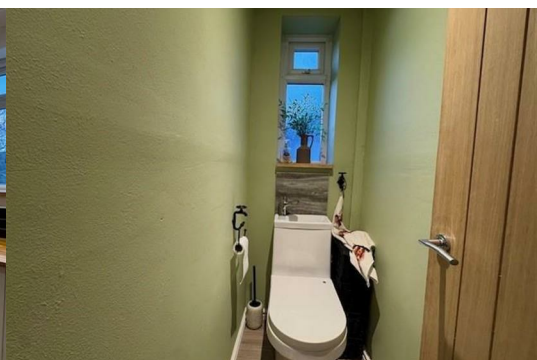
\*\*\*SEMI-DETACHED HOME \*\*\* IDEAL FOR FAMILIES & FIRST-TIME BUYERS \*\*\*DRIVEWAY FRONT & REAR GARDENS\*\*\*DETACHED GARAGE\*\*\*

Cousins Estate Agents are delighted to offer for sale this beautifully presented two-bedroom semi-detached home, located on the ever-popular Cosgrove Crescent, Failsworth.

Tastefully decorated throughout, this inviting property offers bright, spacious accommodation complemented by contemporary décor and quality fixtures and fittings, making it an excellent opportunity for first-time buyers and small families alike.

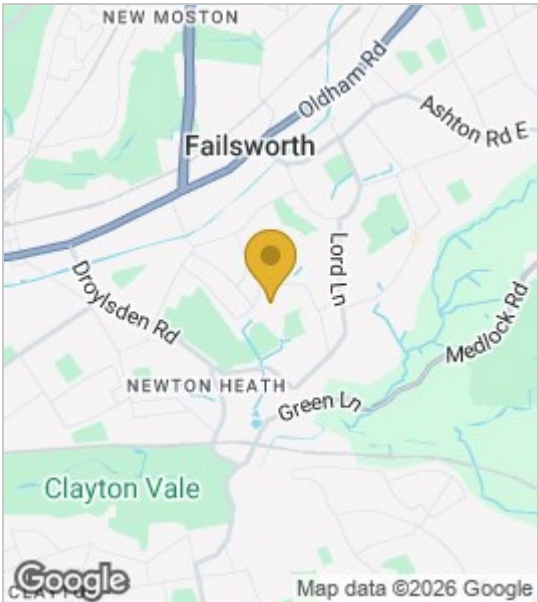
### Ground Floor

The property opens into a welcoming entrance hallway. To the front is a generously sized lounge featuring a bay window, creating a bright and comfortable living space. To the rear, a modern open-plan kitchen is fitted with integrated appliances, including a fridge/freezer, gas hob, and electric oven. A downstairs WC enhances practicality, while the layout

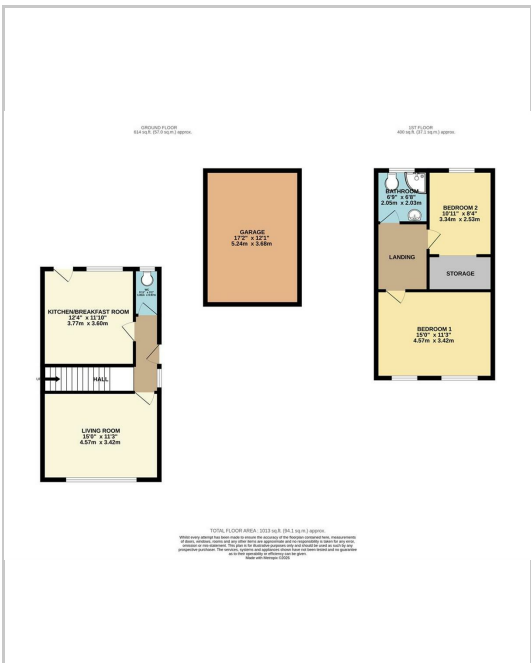


- living room
- kitchen / diner
- Bedroom 1
- Bedroom 2
- Family Bathroom

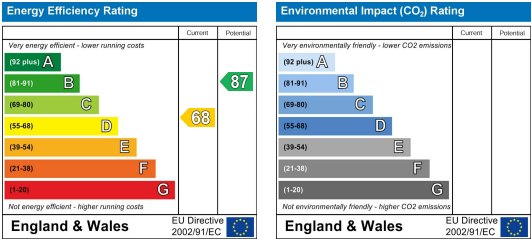
Area Map



Floor Plans



Energy Efficiency Graph



These particulars, whilst believed to be accurate are set out as a general outline only for guidance and do not constitute any part of an offer or contract. Intending purchasers should not rely on them as statements of representation of fact, but must satisfy themselves by inspection or otherwise as to their accuracy. No person in this firms employment has the authority to make or give any representation or warranty in respect of the property.

